

www.csoft.com

WiselImage FM 12

# WiselImage<sup>®</sup> FM

Unique raster and vector technology with advanced tools to process legacy drawings

Floor plans are parametric models consisting of intelligent objects

Graphical front-end for any Facilities Management solution

Floor plan models from 2D-CAD drawings and raster images is just one mouse click away

Improved workflow of floor plan data extraction

Open API to internal data structures of the floor plan models

## What is WiselImage FM?

WiselImage FM is a powerful application, based on CSoft's award-winning raster and vector technology, which enables fast and easy conversion of raster floor and building-plan drawings into parametric models, also including all necessary facilities. Moreover, there is no more the problem, what to do with old paper floor plans, the program recognizes and converts them into intelligent models in less than no time. WiselImage FM is designed to satisfy the requirements of the most demanding organizations in analysis and access to information regarding maintenance and facilities of real estate. WiselImage FM can be integrated with other facility management applications, databases and MS Office, helping to keep all required facilities data up-to-date.

## Who needs WiselImage FM?

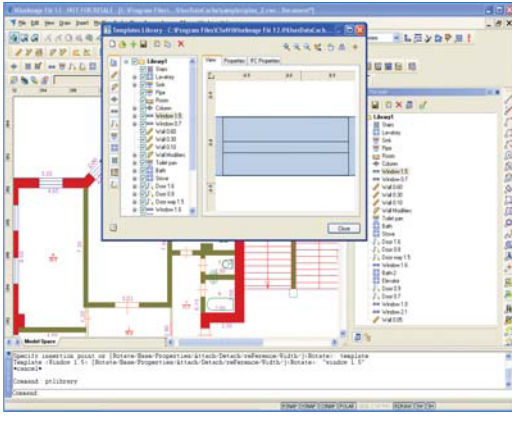
Professionals in facility management and real estate will appreciate WiselImage FM for its efficiency and user-friendly interface. It can be used in different areas where facility management solutions are required. Whatever you manage, commercial or institutional building, WiselImage FM meets all your needs. WiselImage FM provides wide range of easy-to-use tools and technologies to save your valuable time and reach best results for your company.

## WiselImage FM features

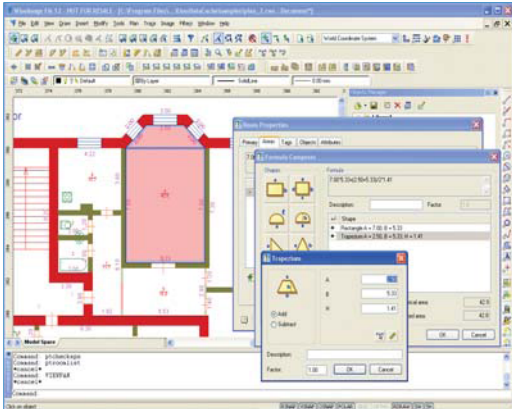
- One step transition from scanner to BIM. WiselImage FM has native support for most wide-format scanners and advanced technology for scanned raster editing and conversion;
  - Creation of floor plans models directly from 2D-CAD drawings and raster images;
  - Advanced tools to draw new, redraw and modify existing floor plans;
  - Extendable and manageable Template Libraries of intelligent objects (Walls, Doors, Windows, Stairs, Columns and etc.);
  - Special tools for Facility Management engineers for management and modification of existing floor plans;
  - FM data and graphics self-contained in just one file;
  - Adjustable classifiers and smooth data exchange due to application-independent data structure that allows users to maintain proper facility standards;
  - API for access to internal data structures of floor plan models;
- ...and yes, we've changed WiselImage FM version number to 12. WiselImage FM is a special version of our flagship product WiselImage Pro for Windows. Since now we will number WiselImage FM with the version of the product it is based on.



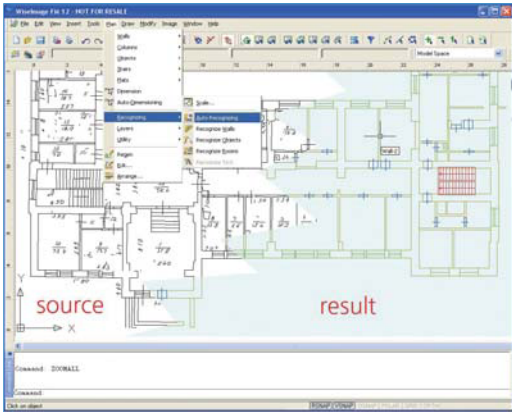
# CSoft



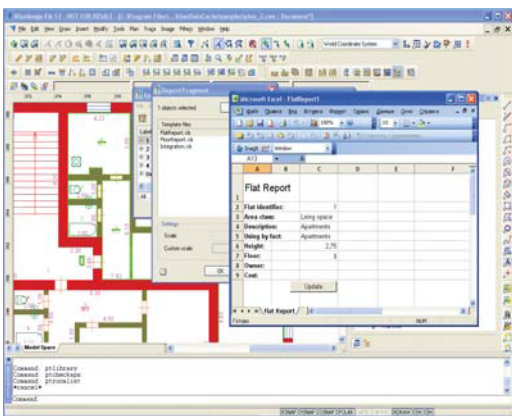
Template Library



Room tools



From scanner to BIM



Export to Excel

## 'Must have' for Facilities Management

The integration of existing drawing archives with computer-aided Facilities Management systems requires an efficient technology to convert and capture FM-related data from the original building floor plans. The need to keep FM data up-to-date through a simple process has motivated the WiselImage FM development. WiselImage FM focuses on efficiency and usability. WiselImage FM delivers advanced tools for floor plan drawing and editing. Its unique tool set also includes automatic and semi-automatic conversion of data such as 2D or raster floor and building-plan drawings into intelligent models. WiselImage FM will recognize a floor plan, extract FM data and create "Intelligent Objects" from vectors or from raster drawings. These objects will contain all the necessary data for your FM solution. WiselImage FM provides an open programming interface for easy integration with Facilities Management applications, databases and MS Office. A Facilities Management solution can access all objects on the floor plan models. Remember that old buildings not yet part of BIM or FM solutions still outnumber BIM'ed properties by more than 10:1. WiselImage FM is designed to help you fast-track your BIM and FM needs.

## Creating floor plans becomes easier

Since WiselImage FM was developed, the process of floor plan creation has become creative and enjoyable. There is a choice from three modes of floor plan creation:

- Parametric mode - Automatic and semi-automatic conversion of original floor plans made by measuring rooms and converting them to a parametric model. WiselImage FM has an opportunity to finely recognize and convert raster (bi-tonal) images (there is a large number of raster enhancement tools to get better result of conversion) and 2D non-parametric drawings (made in AutoCAD or from other CAD software. WiselImage FM also converts results of raster-to-vector conversion).
- Library mode - Traditional floor plan drawing using parametric library objects. WiselImage FM has a user-expandable library of intelligent objects (building elements), you can create new objects from AutoCAD blocks or set of entities.
- Contour mode - Floor plan creation from measured outer and inner contours of the building.

Choose the most appropriate mode and take pleasure in the process of floor plan creation.

## Creation of rooms is more convenient now

Create a room of any contour and WiselImage FM easily calculates its area and furthermore if a room is modified and its area changes, WiselImage FM automatically recalculates affected floor spaces. The application can also perform automatic and semi-automatic dimensioning. Spend less time on routine tasks, let WiselImage FM do it for you.

## WiselImage FM 12 includes some major changes

WiselImage FM includes more than 15 new features in the base functionality of WiselImage and more than 30 new features in the Facilities Management part of WiselImage FM. The FM-related features affect most of the functionality of the application. Some of these features are:

- Extended Export / Import functions;
- Massive changes in the floor plan creation and processing commands;
- New commands and new Drawing Objects;
- Improved Attributes management;
- Changes in Walls and Wall Modifiers;
- Rewritten Tag management.

Your local partner is:

# CSoft



CSoft AS  
Norway, Adolf Tidemands Gate 36,  
N-2000 Lillestrøm  
Phone: +47 928 92800  
E-mail: sales@csoft.com